

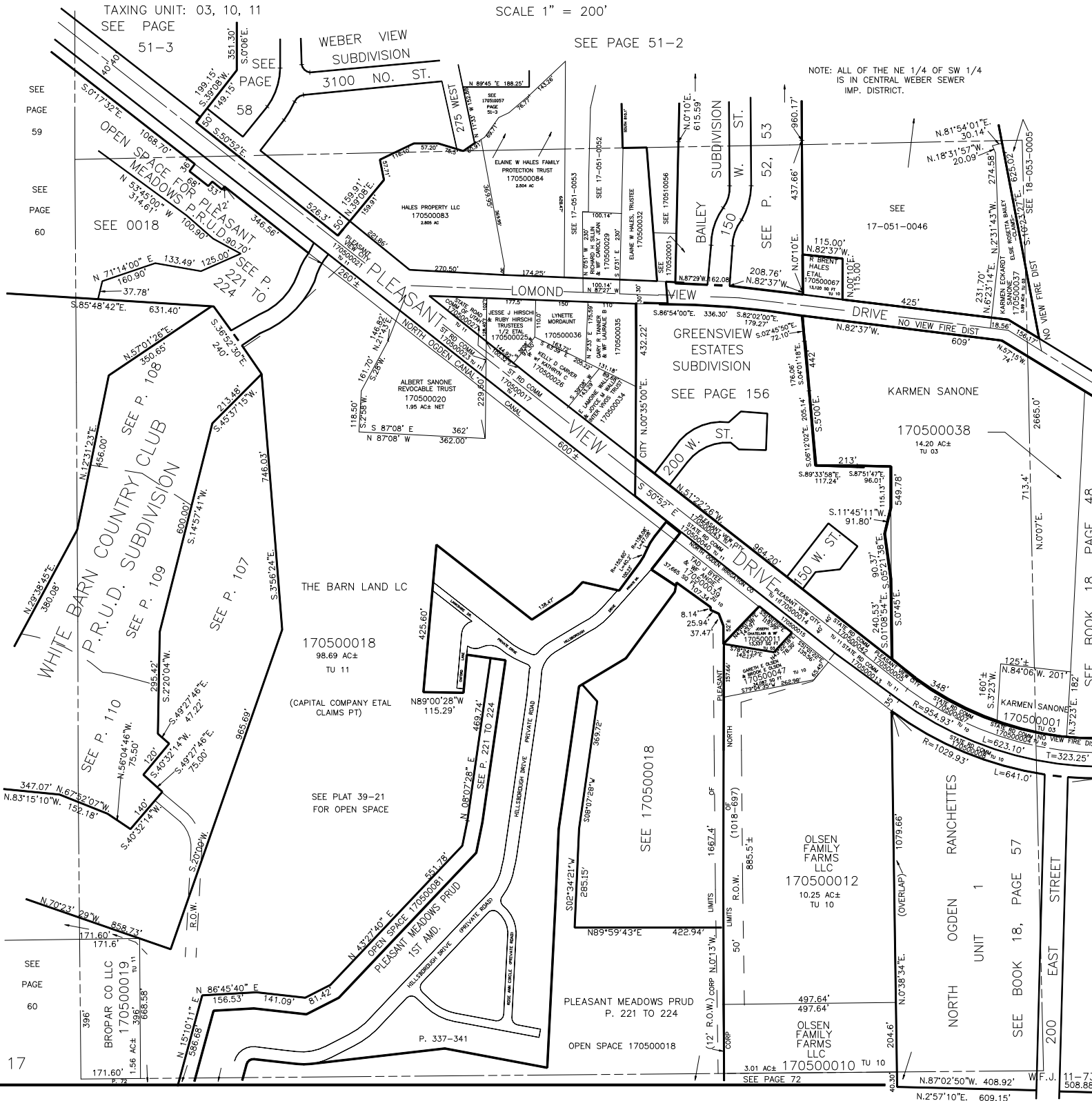
S.W. 1/4 OF SECTION 29, T.7N., R.1W., S.L.B. & M. IN NORTH OGDEN CITY, TOWN OF PLEASANT VIEW, WEBER COUNTY

SCALE 1" = 200'

TAXING UNIT: 03, 10, 11 SEE PAGE 51-3

SEE PAGE 51-2

NOTE: ALL OF THE NE 1/4 OF SW 1/4 IS IN CENTRAL WEBER SEWER IMP. DISTRICT.



17

SEE BOOK 18, PAGE 48

SEE BOOK 18, PAGE 57

11-73 508.88'

N.87°02'50"W. 408.92'

N.2°57'10"E. 609.15'

SEE PAGE 72

SEE PAGE 60

SEE PAGE 60

SEE PAGE 59

SEE PAGE 58

SEE PAGE 57

SEE PAGE 56

SEE PAGE 55

SEE PAGE 54

SEE PAGE 53

SEE PAGE 52

SEE PAGE 51

SEE PAGE 50

SEE PAGE 49

SEE PAGE 48

SEE PAGE 47

SEE PAGE 46

SEE PAGE 45

SEE PAGE 44

SEE PAGE 43

SEE PAGE 42

SEE PAGE 41

SEE PAGE 40

SEE PAGE 39

SEE PAGE 38

SEE PAGE 37

SEE PAGE 36

SEE PAGE 35

SEE PAGE 34

SEE PAGE 33

SEE PAGE 32

SEE PAGE 31

SEE PAGE 30

SEE PAGE 29

SEE PAGE 28

SEE PAGE 27

SEE PAGE 26

SEE PAGE 25

SEE PAGE 24

SEE PAGE 23

SEE PAGE 22

SEE PAGE 21

SEE PAGE 20

SEE PAGE 19

SEE PAGE 18

SEE PAGE 17

SEE PAGE 16

SEE PAGE 15

SEE PAGE 14

SEE PAGE 13

SEE PAGE 12

SEE PAGE 11

SEE PAGE 10

SEE PAGE 9

SEE PAGE 8

SEE PAGE 7

SEE PAGE 6

SEE PAGE 5

SEE PAGE 4

SEE PAGE 3

SEE PAGE 2

SEE PAGE 1